

ROWLAND UNIFIED SCHOOL DISTRICT

BLANDFORD ELEMENTARY SCHOOL

Scope of work for exterior painting

1/29/2018

SCOPE OF WORK: Exterior painting of the Office Building, MPR Building, K-Building, 10, 20, 30, 40, 50 wings, portables 10, 14, 15, 34, 35, 36, 61, 62, 63, 64, 65, 66, 67, 68, 69, 91, 92, breezeways, 4 wood sheds, 1 steel container and ballwall.

This includes the stucco, trim, vents, doors (both sides), exposed conduit, electrical boxes.

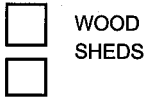
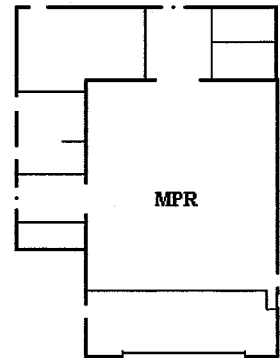
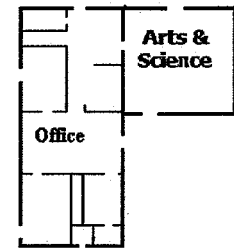
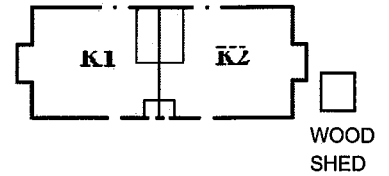
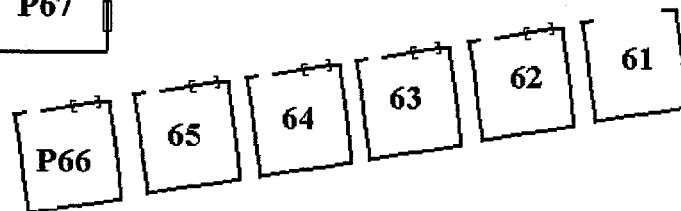
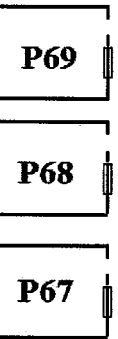
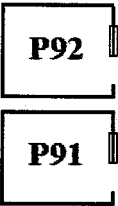
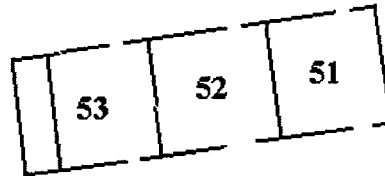
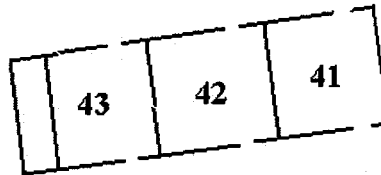
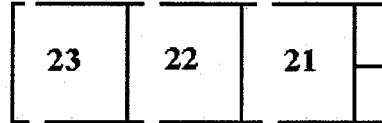
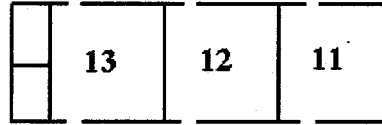
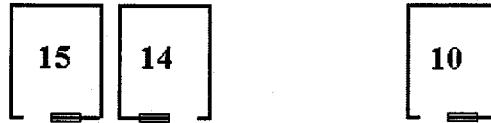
SEE ATTACHED SPECS.

Services will be the below services. To prepare all surfaces to be painted by power washing, scraping loose paint, sanding, caulking, patching holes and cracks on wood and stucco, masking windows, covering plants and shrubbery. Prime all non-stucco surfaces and apply two finish coats. Primer to be white, first coat to be 60% tint, then final coat and inspected between coats by District personnel.

1. Pressure wash the stucco, siding and trim to remove dirt and debris.
2. Properly prepare, and paint stucco on Office Building, MPR Building, K-Building, 10, 20, 30, 40, 50 Wings and P61.
Color to be Dunn Edwards Spartashield Ext. flat SSL10-0 Indian White.
3. Properly prepare, prime and paint siding on Portables 10, 14, 15, 34, 35, 36, 62, 63, 64, 65, 66, 67, 68, 69, 91, 92 and 4 wood sheds. All wood siding to be primed and rolled (two coats). Shed locations on attached map.
Color to be Dunn Edwards Spartashield Ext. semi-gloss SSL50-1 Indian White.
4. Properly prepare, prime and paint two finish coats on all trim, door jambs, vents, and panels on Office Building, MPR Building, K-Building, 10, 20, 30, 40, 50 wings and Portables 10, 14, 15, 34, 35, 36, 61, 62, 63, 64, 65, 66, 67, 68, 69, 91, 92 and 4 wood sheds.
Color to be Dunn Edwards Spartashield Ext. semi-gloss 7366 Blue Suede Shoes.
5. Properly prepare, prime and paint all doors (both sides, two coats).
Color to be Dunn Edwards Aristoshield Ext. semi-gloss 7366 Blue Suede Shoes.
6. Properly prepare, prime and paint all exposed conduit, electrical boxes and electrical panels on Office Building, MPR Building, K-Building, 10, 20, 30, 40, 50 wings, and Portables 10, 14, 15, 34, 35, 36, 61, 62, 63, 64, 65, 66, 67, 68, 69, 91 and 92. Color to match background color.
7. Properly prepare, prime and paint 1 steel container. Container location on attached map.
Color to be Dunn Edwards Spartashield Ext. flat SSL10-0 Indian White.
8. Properly prepare and paint ballwall (two coats). Ballwall location on attached map.
9. Have control card at store where material is purchased.

ALL WORK TO BE COMPLETED IN 30 CALENDER DAYS FROM NOTICE TO PROCEED.

For any questions call, Charles Jansen cell# 626-712-7261 or Chris Ferraro cell# 626-712-7267



BALL WALL



BLANDFORD ELEMENTARY SCHOOL

EXTERIOR COLORS

1/9/2018

Dunn Edwards

163 10:22 11/15/2016 HACIENDA HTS

INDIAN WHITE

SSHL10-0 SPRTASHLD EX FLAT

1 Gallon L Y Notation /48

04: 0 Y+ 37.875

07: 0 Y+ 1.500

13: 0 Y+ 2.625 (A)

ROWLAND SCHOOL DISTRICT

Custom Tinted Paint - Not Returnable for Exchange or Refund
Color may vary slightly from a color chip or container to container.
Check for correct color match and confirm color before application.
Dunn-Edwards accepts no responsibility for any mis-matched paint
after it has been applied.

Dunn Edwards

163 09:18 3/29/2017 HACIENDA HTS

INDIAN WHITE

SSHL50-0 SPRTASHLD EX S/G

5 Gallons L Y Notation /48

04: 3 Y+ 27.875

07: 0 Y+ 6.875

13: 0 Y+ 11.250 (A)

ROWLAND SCHOOL DISTRICT

Custom Tinted Paint - Not Returnable for Exchange or Refund
Color may vary slightly from a color chip or container to container.
Check for correct color match and confirm color before application.
Dunn-Edwards accepts no responsibility for any mis-matched paint
after it has been applied.



Dunn Edwards

0163 09:04 8/24/2016

BLUE SUEDE SHOES 7366(LIGHTER F

SSHL50-0 SPRTASHLD EX S/G

5 Gallons M Y Notation /48

11: 9 Y+ 16.875

13: 9 Y+ 28.875

14: 13 Y+ 36.000

ROWLAND SCHOOL DISTRICT

Custom Tinted Paint - Not Returnable for Exchange or Refund
Color may vary slightly from a color chip or container to container.
Check for correct color match and confirm color before application.
Dunn-Edwards accepts no responsibility for any mis-matched paint
after it has been applied.

Dunn Edwards

163 09:24 3/29/2017 HACIENDA HTS

BLUE SUEDE SHOES 7366(LIGHTER MATC

ASHL50-0 ARISTOSHL IN/EX S/G

5 Gallons M Y Notation /48

11: 9 Y+ 16.875

13: 9 Y+ 28.875

14: 13 Y+ 36.000

ROWLAND SCHOOL DISTRICT

Custom Tinted Paint - Not Returnable for Exchange or Refund
Color may vary slightly from a color chip or container to container.
Check for correct color match and confirm color before application.
Dunn-Edwards accepts no responsibility for any mis-matched paint
after it has been applied.



SECTION 09900

PAINTING *SPECS*

1. PART 1 GENERAL

1.1 SECTION INCLUDES

- A. Surface preparation.
- B. Products and application.
- C. Surface finish schedule.

1.2 SUMMARY OF PAINTED SUBSTRATES

A. Section includes the application of paint systems on the following interior substrates:

- 1. Concrete.
- 2. Concrete masonry units (CMU).
- 3. Primed or unprimed steel.
- 4. Galvanized metal.
- 5. Guardrails and fittings.
- 6. Steel doors, frames and lights.
- 7. Glass frames in steel and wood doors.
- 8. Wood doors.
- 9. Access doors and frames.
- 10. Wood.
- 11. Horizontal and vertical gypsum board.
- 12. Plaster.
- 13. Suspended acoustic ceilings.
- 14. Applied acoustic ceilings.
- 15. Wall louvers.

B. Section includes the application of paint systems on the following exterior substrates:

- 1. Concrete.
- 2. Concrete masonry units (CMU).
- 3. Primed or unprimed steel.
- 4. Galvanized metal.
- 5. Guardrails, and fittings.
- 6. Steel doors, frames and lights.

7. Glass frames in steel and wood doors.
 8. Wood doors.
 9. Wood.
 10. Portland cement plaster (stucco).
 11. Horizontal or vertical gypsum board or sheathing.
 12. Wall louvers.
 13. Mechanical roof mounted equipment.
- C. Substrate listings are for principal surfaces only. Refer to drawings, details and individual specification sections for items, surfaces, and substrates not specifically listed.

1.3 REFERENCES

- A. ASTM D16 - Definitions of Terms Relating to Paint, Varnish, Lacquer, and Related Products.
- B. SSPC - The Society for Protective Coatings.

1.4 SYSTEM DESCRIPTION

- A. Preparation of all surfaces to receive final finish.
- B. Painting and finishing work of this section using coating systems of materials including primers, sealers, fillers, and other applied materials whether used as prime, intermediate, or finish coats.
- C. Surface preparation, priming, and finish coats specified in this Section are in addition to shop-priming and surface treatment specified under other Sections.
- D. Painting and finishing all exterior and interior surfaces of materials including structural, mechanical, and electrical work on site, in building spaces, and above or on the roof.
- E. Paint exposed surfaces except where a surface or material is specifically indicated not to be painted or is to remain natural. Where an item or surface is not specifically mentioned, paint the same as similar adjacent materials or surfaces.

1.5 DEFINITIONS

- A. Conform to ASTM D16 for interpretation of terms used in this Section.

1.6 QUALITY ASSURANCE

- A. Product Manufacturer: Company specializing in manufacturing quality paint and finish products with five years experience.
- B. Applicator: Company specializing in commercial painting and finishing with five years documented experience.
- C. Coats: The number of coats specified is the minimum number acceptable. If full coverage is not obtained with the specified number of coats, apply such additional coats as are necessary to produce the required finish.
- D. Employ coats and undercoats for all types of finishes in strict accordance with the recommendations of the paint manufacturer.
- E. Provide primers and undercoat paint produced by the same manufacturer as the finish coat.

- F. The minimum dry film thickness of each coat of paint shall comply with the manufacturer's recommendations for each type of paint used.

1.7 REGULATORY REQUIREMENTS

- A. Comply with applicable codes and regulations of governmental agencies having jurisdiction including those having jurisdiction over airborne emissions and industrial waste disposal. Where those requirements conflict with this specification, comply with the more stringent provisions.
- B. Comply with the current applicable regulations of the California Air Resources Board (CARB) and the Environmental Protection Agency (EPA).
- C. Comply with South Coast Air Quality Management District (SCAQMD) Rule 1113. A copy of this regulation can be obtained from <http://www.aqmd.gov/rules/reg/11/r1113.pdf>.
- D. In the South Coast Air Quality Management District (SCAQMD), where lower VOC contents are specified for a number of categories, certain products may be covered under the manufacturer's SCAQMD - approved Averaging Program. As a result, certain products may be fully compliant with SCAQMD Rule 1113, despite having VOC contents higher than specified limits.

1.8 SUBMITTALS

- A. Submit product data under provisions of Section 01330.
- B. Provide manufacturer's technical information and instructions for application of each material proposed for use by catalog number.
- C. List each material by catalog number and cross-reference specific coating with specified finish system.
- D. Provide manufacturer's certificate that products proposed meet or exceed specified materials.
- E. Submit samples under provisions of Section 01330.
- F. Submit two samples 8-1/2 x 11 inch in size of each paint color and texture applied to cardboard. Resubmit samples until acceptable color, sheen and texture is obtained.
- G. On same species and quality of wood to be installed, submit two 4 x 8 inch samples showing system to be used.

1.9 FIELD SAMPLES

- A. Provide field samples under provisions of Section 01330.
- B. On wall surfaces and other exterior and interior components, duplicate specified finishes on at least 100 sq.ft. of surface area.
- C. Provide full-coat finishes until required coverage, sheen, color and texture are obtained.
- D. Simulate finished lighting conditions for review of field samples.
- E. After finishes are accepted, the accepted surface may remain as part of the work and will be used to evaluate subsequent coating systems applications of a similar nature.

1.10 DELIVERY, STORAGE, AND HANDLING

- A. Deliver products to site and store and protect under provisions of Section 01600.
- B. Deliver products to site in sealed and labeled containers; inspect to verify acceptance.
- C. Container labeling to include manufacturer's name, type of paint, brand name, brand code, coverage, surface preparation, drying time, cleanup, color designation, and instructions for mixing and reducing. Paint containers not displaying product identification will not be acceptable.

- D. Store paint materials at minimum ambient temperature of 50 degrees F and a maximum of 90 degrees F, in well ventilated area, unless required otherwise by manufacturer's instructions.
- E. Take precautionary measures to prevent fire hazards and spontaneous combustion.

1.11 ENVIRONMENTAL REQUIREMENTS

- A. Provide continuous ventilation and heating facilities to maintain interior surface and ambient temperatures above 50 degrees F with a maximum humidity level of 50 percent for 24 hours before, during, and 48 hours after application of finishes, unless required otherwise by manufacturer's instructions.
- B. Do not apply exterior coatings during rain or snow, or when relative humidity is above 50 percent, unless required otherwise by manufacturer's instructions.
- C. Minimum Application Temperatures for Latex Paints: 50 degrees F for interiors; 50 degrees F for exterior; unless required otherwise by manufacturer's instructions.
- D. Minimum Application Temperature for Varnish and Urethane Finishes: 65 degrees F for interior or exterior, unless required otherwise by manufacturer's instructions.
- E. Provide lighting level of 80 foot candles measured mid-height at substrate surface.

1.12 EXTRA MATERIAL

- A. Provide a five gallon unopened container of each color and surface texture to Owner.
- B. Label each container with color, texture, and room locations in addition to the manufacturer's label.

2. PART 2 PRODUCTS

2.1 ACCEPTABLE MANUFACTURERS - PAINT

- A. Unless specifically identified otherwise, product designations included at end of section are those of the Dunn-Edwards Corporation, www.dunnedwards.com and shall serve as the standard for kind, quality, and function.
- B. Subject to compliance with requirements, other manufacturers offering equivalent products are:
 - 1. Vista Paint Corporation, www.vistapaint.com.
- C. Substitutions: Under provisions of Section 01630.

2.2 MATERIALS

- A. Ready mixed, except field catalyzed coatings. Process pigments to a soft paste consistency, capable of being readily and uniformly dispersed to a homogeneous coating.
- B. Good flow and brushing properties; capable of drying or curing free of streaks or sags.
- C. "Deep Tone" colors to be composed of 100 percent acrylic pigments with a colored base.
- D. Accessory Materials: Linseed oil, shellac, turpentine, paint thinners and other materials not specifically indicated but required to achieve the finishes specified, of commercial quality.

2.3 FINISHES

- A. Refer to schedule at end of Section for surface finish schedule.

3. PART 3 EXECUTION

3.1 INSPECTION

- A. Verify that surfaces are ready to receive work as instructed by the product manufacturer.
- B. Examine surfaces to be finished prior to commencement of work. Report any condition that may potentially affect proper application.
- C. Measure moisture content of surfaces using an electronic moisture meter. Do not apply finishes unless moisture content of surfaces are below the following maximums:
 - 1. Plaster and Gypsum Wallboard :12 percent.
 - 2. Masonry, Concrete, and Concrete Unit Masonry :12 percent.
 - 3. Interior Located Wood : 15 percent.
 - 4. Exterior Located Wood : 15 percent.
- D. Beginning of installation means acceptance of existing surfaces.

3.2 SURFACE PREPARATION - GENERAL

- A. Remove electrical plates, hardware, light fixture trim, and fittings prior to preparing surfaces or finishing.
- B. Remove all finish hardware from doors and frames prior to preparing surfaces or finishing.
- C. Correct minor defects and clean surfaces which affect work of this Section.
- D. Shellac and seal marks which may bleed through surface finishes.
- E. Impervious Surfaces: Remove mildew by scrubbing with solution of tri-sodium phosphate and bleach. Rinse with clean water and allow surface to dry.
- F. Insulated Coverings: Remove dirt, grease, and oil from canvas and cotton.
- G. Concrete Floors: Remove contamination, acid etch, and rinse floors with clear water. Verify required acid-alkali balance is achieved. Allow to dry.
- H. Gypsum Board: Repair all voids, nicks, cracks and dents with patching materials and finish flush with adjacent surface. Latex fill minor defects. Spot prime defects after repair.
- I. Galvanized Surfaces: Remove surface contamination and oils and wash with solvent. Pretreat with phosphoric acid etch or vinyl wash. Apply coat of etching primer the same day as pretreatment is applied.
- J. Concrete and Unit Masonry: Remove dirt, loose mortar, scale, salt or alkali powder, and other foreign matter. Remove oil and grease with a solution of tri-sodium phosphate; rinse well and allow to dry. Remove stains caused by weathering of corroding metals with a solution of sodium metasilicate after thoroughly wetting with water. Allow to dry.
- K. Plaster: Fill hairline cracks, small holes, and imperfections with latex patching plaster. Make smooth and flush with adjacent surfaces. Wash and neutralize high alkali surfaces.
- L. Uncoated Steel and Iron: Remove grease, scale, dirt, and rust. Where heavy coatings of scale are evident, remove by wire brushing or sandblasting; clean by washing with solvent. Apply a treatment of phosphoric acid solution, ensuring weld joints, bolts, and nuts are similarly cleaned. Prime paint after repairs.
- M. Shop Primed Steel: Sand and scrape to remove loose primer and rust. Feather edges to make touch-up patches inconspicuous. Clean surfaces with solvent. Prime paint steel surfaces.
- N. Wood Doors: Seal top and bottom edges with 2 coats of spar varnish sealer.

- O. Existing surfaces to be recoated shall be thoroughly cleaned and deglossed by sanding or other means prior to painting. Patched and bare areas shall be spot primed with same primer as specified for new work.

3.3 SURFACE PREPARATION - MODERNIZATION

- A. Properly prepare all existing surfaces to receive new paint.
- B. Prior to application of any new paint, existing surfaces to be cleaned free of damaged paint, dust, corrosion, and other foreign matter which will destroy bond or mar appearance of new paint.
- C. Sand, scrape, fill and repair surfaces flush with suitable fillers. Patch and repair; feather edges to provide smooth transitions; match existing surfaces.
- D. Remove hardware and accessories, machined surfaces, plates, lighting fixtures, and similar items in place and not-to-be-finish painted, or provide surface-applied protection. Reinstall removed items upon completion of work in each area.
- E. Existing surfaces to be painted shall be thoroughly cleaned and deglossed by sanding or other means prior to painting. Patched and bare areas shall be shall be spot primed with same primer as for new work.
- F. Existing paint removal:
 - 1. Remove loose, blistered, scaled, oxidized, cracked, alligatored, or defaced paint down to a sound surface.
 - 2. Brush and clean free all loose material.
 - 3. Feather edges of removal areas to provide a smooth transition between surfaces.
- G. Perform preparation and cleaning procedures in strict accordance with coating manufacturer's instructions for each substrate condition.
- H. Washing and Cleaning:
 - 1. Use high pressure water machine to spray and remove all loose and foreign materials.
 - 2. At building interiors, wash all surfaces clean with approved cleaner and rinse with clean water.
 - 3. At building interiors, vacuum existing ceiling panels to remove all dirt and dust from the material surface. Utilize caution so as not to mar or damage the finish surface in any way.
 - 4. Completely remove wax from surfaces which receive new paint.
- I. Remove dust, grit, and foreign matter from existing wood surfaces. Sand surfaces and dust clean. Spot coat knots, pitch streaks, and sappy section with pigmented stain sealer when surfaces are to be painted. Fill nail holes, cracks, and other defects after priming and spot prime repairs when fully cured.
- J. Repair and crack filling:
 - 1. Wood: Putty cracks and holes flush at stained and or varnished work, color putty to match. Sand smooth any rough spots. Seal knots and pitch pockets.
 - 2. Gypsum Wallboard: Fill all nail heads, screw heads, holes, cracks, or defects with drywall joint compound or spackle. Sand any rough spots smooth; do not raise nap on paper covering. Remove dust. Skim coat drywall must be sealed with a suitable sealer recommended by the coating manufacturer.
 - 3. Plaster:
 - (a) Cracks exceeding 1/16 inch wide shall be V-grooved out, and then filled flush.

- (b) Exterior Plaster: Small defects may be filled with exterior spackle. Cracks more than 1/16 inch wide shall be filled with cement grout, textured to match adjacent surfaces.
- 4. Concrete / Masonry: Fill as specified for exterior plaster.
- K. Natural / Stain Finished Wood Doors:
 - 1. Typically, fully strip existing natural finish clear coat, fill all dents, gouges, scrapes, etc., and finish sand to prepare surface to receive a complete new finish coat system.
 - 2. All patching materials shall be natural wood dough tinted to match existing natural wood color.
 - 3. Doors shall appear as new when work is finished.
- L. Concrete and masonry surfaces shall be dry, clean, and free of dirt, efflorescence, encrustation, mortar spots, and other foreign matter. Glazed surfaces on concrete shall be roughened or etched to uniform texture.
- M. Ferrous metal shall be cleaned of oil, grease, and foreign matter. Cleaning method: SSPC-SP No. 1 "Solvent Cleaning".
- N. Ferrous Steel: Where raw metal surface is exposed, proceed as follows:
 - 1. Cleaning method: SSPC-SP No. 2 "Hand Cleaning" or No. 3 "Power Brush Cleaning" as required to remove corrosion, loose paint, and rust.
 - 2. Priming: Prime immediately after cleaning.
- O. Galvanized Metal: Where galvanizing is exposed, proceed as follows:
 - 1. Cleaning: Solvent clean per SSPC-SP No. 1 "Solvent Cleaning".
 - 2. Pre-Treatment; Apply Supreme Chemical Metal Clean and Etch SC-ME01, follow manufacturer's recommendations and the following:
 - (a) Application: Brush apply in a thin even coat. Remove excessive solution from surface with rags, squeegee, or sponge. When using full strength, rinse surface with water.
 - (b) Thinning: Use water, do not reduce solution beyond 3 parts water to 1 part Supreme Chemical Metal Clean and Etch SC-ME01.
 - (c) Drying: Allow to dry for 10 minutes, rinse thoroughly with water and wipe dry with rags.
 - 3. Cleaned and treated galvanized metal should be primed within 48 hours.
- P. Thoroughly back paint all surfaces of exterior and interior finish lumber and millwork, including doors and window frames, trim, cabinetwork, etc., which will be concealed after installation. Back paint items to be painted with a priming coat. Use a clear sealer for back priming where transparent finish is required.
- Q. Pipes, ducts, hangers, exposed steel and ironwork, and primed metal surfaces of equipment installed under mechanical and electrical work shall be cleaned prior to priming.

3.4 PROTECTION OF ADJACENT WORK

- A. Protect elements surrounding the work of this Section from damage or disfiguration.
- B. Repair damage to other surfaces caused by work of this Section.
- C. Furnish drop cloths, shields, and protective methods to prevent spray or droppings from disfiguring other surfaces.
- D. Remove empty paint containers from site.

3.5 WORK NOT TO BE PAINTED

- A. Painting is not required on surfaces in concealed and inaccessible areas such as furred spaces, foundation spaces, utility tunnels, pipe spaces and duct shafts.
- B. Do not paint metal surfaces such as stainless steel, chromium plate, brass, bronze, and similar finished metal surfaces.
- C. Do not paint anodized aluminum or other surfaces which are specified to be factory pre-finished.
- D. Do not paint sandblasted or architecturally finished concrete surfaces.
- E. Do not paint prefinished acoustic materials or acoustic suspension systems.
- F. Do not paint over Underwriters Laboratories, Factory Mutual or other code-required labels or identifications.

3.6 APPLICATION

- A. Apply products in accordance with manufacturer's instructions.
- B. Do not apply finishes to surfaces that are not dry.
- C. Apply prime coat to surfaces which are to be painted or finished.
- D. Apply each coat to uniform finish.
- E. Apply each coat of paint slightly darker than preceding coat unless otherwise approved.
- F. Sand lightly between coats to achieve required finish.
- G. Allow applied coat to dry before next coat is applied.
- H. The number of coats specified is the minimum that shall be applied. Apply additional coats when undercoats, stains or other conditions show through final paint coat, until paint film is of uniform finish, color and appearance.
- I. Where clear finishes are required, tint fillers to match wood. Work fillers into the grain before set. Wipe excess from surface.
- J. Prime back surfaces of interior and exterior woodwork with primer paint.
- K. Prime back surfaces of interior woodwork scheduled to receive stain or varnish finish with gloss varnish reduced 25 percent with mineral spirits.
- L. Paint mill finished door seals to match door or frame.
- M. Paint primed steel glazing stops in doors to match door or frame.
- N. Cloudiness, spotting, lap marks, brush marks, runs, sags, spikes and other surface imperfections will not be acceptable.
- O. Where spray application is used, apply each coat of the required thickness. Do not double back to build up film thickness of two coats in one pass.
- P. Where roller application is used, roll and redistribute paint to an even and fine texture. Leave no evidence of roller laps, irregularity of texture, skid marks, or other surface imperfections.

3.7 FINISHING MECHANICAL AND ELECTRICAL EQUIPMENT

- A. Refer to Section 15800 and Section 16000 for schedule of color coding and identification banding of equipment, ductwork, piping, and conduit.

- B. Paint shop primed equipment. Do not paint shop prefinished items.
- C. Remove unfinished louvers, grilles, covers, and access panels on mechanical and electrical components and paint separately.
- D. Prime and paint insulated and exposed pipes, conduit, boxes, insulated and exposed ducts, hangers, brackets, collars and supports, except where items are prefinished.
- E. Replace identification markings on mechanical or electrical equipment when painted accidentally.
- F. Paint interior surfaces of air ducts, and connector and baseboard heating cabinets that are visible through grilles and louvers with one coat of flat black paint, to limit of sight line. Paint dampers exposed behind louvers, grilles, and connector and baseboard cabinets to match face panels.
- G. Paint exposed conduit and electrical equipment occurring in finished areas.
- H. Paint both sides and edges of plywood backboards for electrical and telephone equipment before installing equipment.
- I. Color code equipment, piping, conduit, and exposed ductwork in accordance with requirements indicated. Color band and identify with flow arrows, names, and numbering.
- J. Replace electrical plates, hardware, light fixture trim, and fittings removed prior to finishing.
- K. Paint grilles, registers, and diffusers which do not match color of adjacent surface.
- L. Paint all mechanical and electrical equipment, vents, fans, and the like occurring on roof.
- M. Do not paint moving parts of operating units; mechanical or electrical parts such as valve operators; linkages; sensing devices; and motor shafts.
- N. Do not paint over labels or equipment identification markings.
- O. Do not paint mechanical room specialties such as compressors, boilers, pumps, control panels, etc.
- P. Do not paint switch plates, light fixtures, and fixture lenses.

3.8 CLEANING

- A. As Work proceeds, promptly remove paint where spilled, splashed, or spattered.
- B. During progress of Work maintain premises free of unnecessary accumulation of tools, equipment, surplus materials, and debris.
- C. Collect cotton waste, cloths, and material which may constitute a fire hazard, place in closed metal containers and remove daily from site.

3.9 PROTECTION OF COMPLETED WORK

- A. Protect finished installation under provisions of Section 01600.
- B. Erect barriers and post warning signs. Maintain in place until coatings are fully dry.
- C. Confirm that no dust generating activities will occur following application of coatings.

3.10 PATCHING

- A. After completion of painting in any one room or area, repair surfaces damaged by other trades.
- B. Touch-up or re-finish as required to produce intended appearance.

3.11 FIELD QUALITY CONTROL

- A. Field inspection and testing will be performed under provisions of Section 01458.
- B. The Owner reserves the right to invoke the following test procedure at any time and as often as the Owner deems necessary.
- C. The Owner will engage the services of an independent testing agency to sample paint material being used.
- D. Samples of material delivered to the Project will be taken, identified, sealed, and certified in the presence of the Contractor.
- E. The testing agency will perform appropriate quantitative materials analysis and other characteristic testing of materials as required by the Owner.
- F. If test results show materials being used and their installation do not comply with specified requirements or manufacturer's recommendations, the Contractor may be directed to stop painting, remove noncomplying paint, pay for testing and repaint surfaces to acceptable condition.

3.12 COLOR SCHEDULE

- A. Paint and finish colors shall be selected by the Architect from manufacturer's entire range of standard and custom color selections and special colors selected to match or compliment the colors of other materials, equipment, or components which comprise the work.
- B. Access doors, registers, exposed piping, electrical conduit and mechanical/electrical panels: Generally the same color as adjacent walls.
- C. Exterior and interior steel doors, frames and trim: Generally a contrasting color to adjacent walls.
- D. Doors generally are all the same color, but of a contrasting color from frame and trim. *REMOVE?*
- E. Exterior and interior steel fabrications: Generally a contrasting color to adjacent walls.
- F. Exposed interior mechanical/ductwork: Generally a contrasting color to adjacent walls or ceiling.
- G. Ceilings are generally to be painted a different color than walls.
- H. Approximately 20 percent of overall painting work will be required to be "Deep Tone" colors. This work will require one additional coat of paint beyond that as specified.

3.13 SCHEDULE - EXTERIOR SURFACES

- A. Concrete Masonry Units (Flat Acrylic)
 - Fill coat: SBRPROO Smooth Blocfil Premium
 - 1st coat: EVSH10 Evershield
 - 2nd coat: EVSH10 Evershield
- B. Cement Plaster
 - 1st coat: Vista 4000 Uniprime
 - 2nd coat: Vista 3000 Acribond
 - 3rd coat: Vista 3000 Acribond

C. Steel - Primed or Unprimed (Semi-Gloss)

1st coat:	Vista 9600 Protec Metal Prime
2nd coat:	Vista 9800 Protec Alkyd Emulsion Semi-Gloss Enamel
3rd coat:	Vista 9800 Protec Alkyd Emulsion Semi-Gloss Enamel

3.14 SCHEDULE - INTERIOR SURFACES

A. Concrete Masonry Units

1st coat:	Vista 9600 Protec Metal Prime
2nd coat:	Vista 8400 Carefree Semi-Gloss
3rd coat:	Vista 8400 Carefree Semi-Gloss

B. Steel - Primed or Unprimed (Semi-Gloss)

1st coat:	Vista 9600 Protec Metal Prime
2nd coat:	Vista 9800 Protec Alkyd Emulsion Semi-Gloss Enamel
3rd coat:	Vista 9800 Protec Alkyd Emulsion Semi-Gloss Enamel

C. Gypsum Board

1st coat:	Vista 155 Seal Kote
2nd coat:	Vista 8400 Carefree Semi-Gloss
3rd coat:	Vista 8400 Carefree Semi-Gloss

END OF SECTION